

# Site

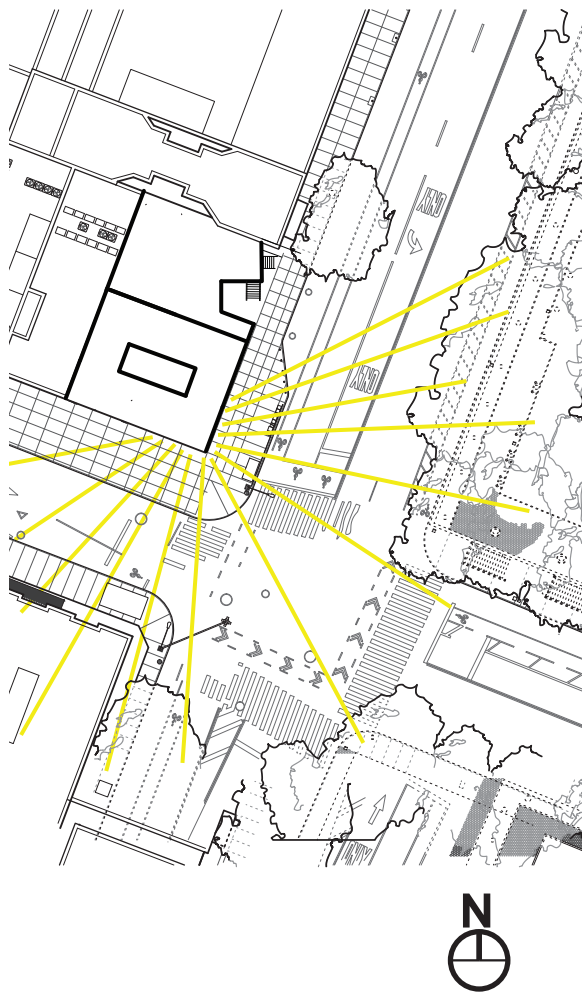


Two of the faces are facing the walls of the neighbor buildings. Only two walls create a new site condition. Accordingly the two walls of the building have to be opaque thick walls.



## Open Space and Parks

The archive is facing the Sara D. Roosevelt. Eleanor Roosevelt's mother-in-law Sara D. Roosevelt (1854-1941) was a much beloved figure when Manhattan's Sara D. Roosevelt Park was named for her in 1934. Known as the "First Mother" -- this at a time when very few presidents' mothers were alive while they served in the Oval Office -- the park's dedication ceremony was broadcast over radio from Maine to Virginia, and attended in person by 100,000 people. A shimmering stretch of green amidst the sea of concrete, asphalt, and tightly-packed buildings, Sara D. Roosevelt Park provides a refreshing respite for residents and visitors of Manhattan's Lower East Side. The park remains a vibrant common ground for senior citizens, children, and recent immigrants, as well as the more recent addition of artists and young professionals. The largest stretch of open space in the neighborhood, Sara D. Roosevelt Park caters to its wide variety of users by offering a diverse array of facilities and activities. The elevator is made of glass and the emergency stairs' wall facing the park is also made of glass. People using those circulation components can contemplate the Park.

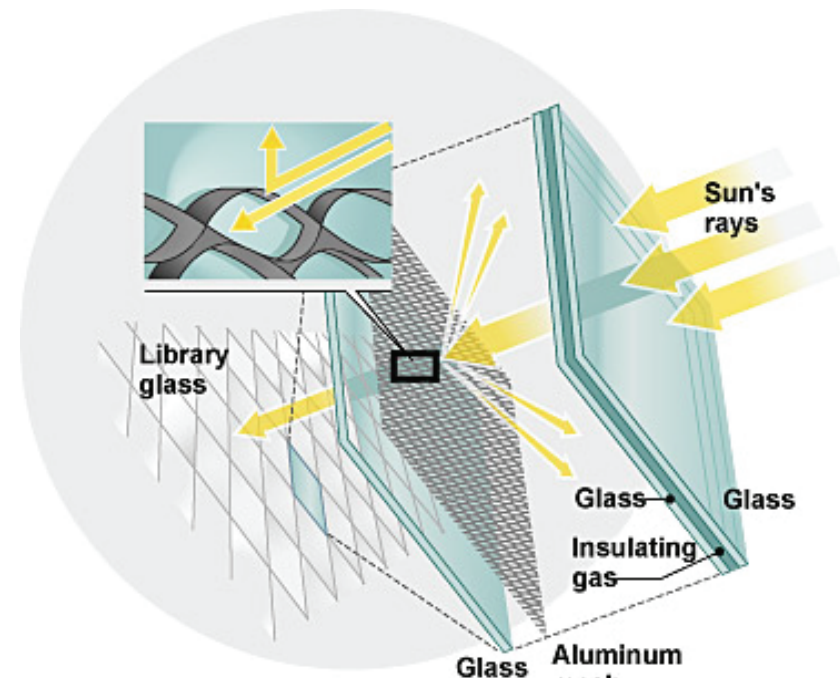


## Solar Orientation

A small part of the East facade receives direct sunlight from 8 am to 12 pm. The South facade receives direct sunlight from 12pm to 3pm. The design should be time sensitive and the book stack should be protected from the light. The most important programs are in the South part of the building : the Archive, the reading space, the entry, and the auditorium. The core, that includes the mechanical spaces, the staff offices, the lavatories, and the emergency stairs, is set back. These two are separated by the vertical circulation components.



# Materials



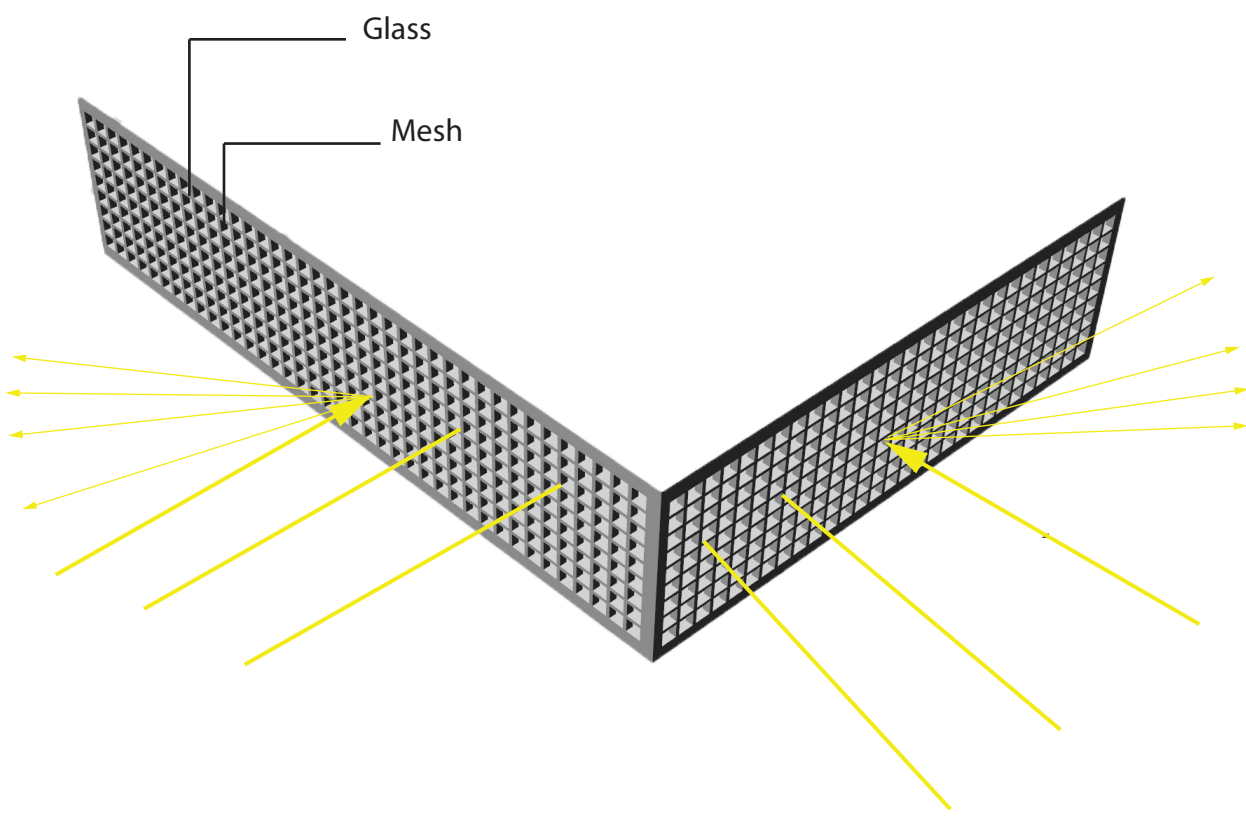
Precedent: Seattle Library

The all-glass walls of the library posed the challenge of protecting the books and visitors from direct sunlight. Expanded-aluminum mesh sandwiched between plates of insulated glass deflects 90 percent of direct sunlight while retaining clear views. It reduces glare and heat.

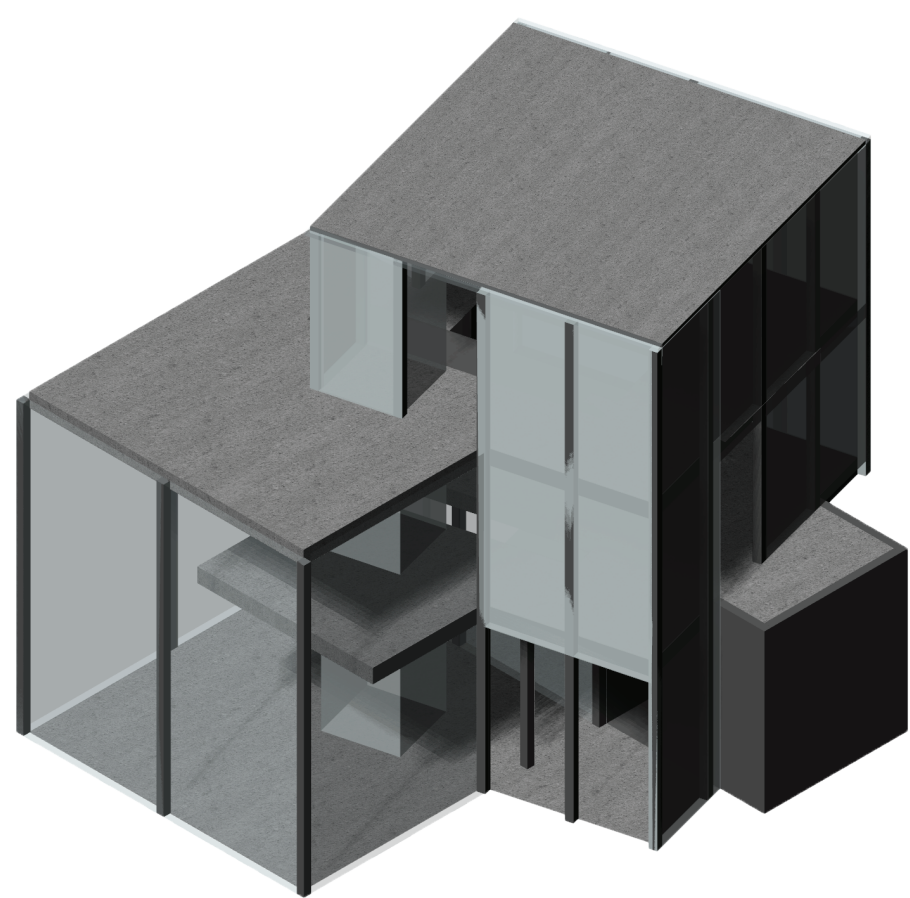
Areas of the building that are not exposed to direct sun did not need the mesh and were left clear.

In the archive, the glass is in between an aluminum mesh of squares separated very slightly. This mesh is applied only to the part of the building that receives direct sunlight (facing South) and protects the books.

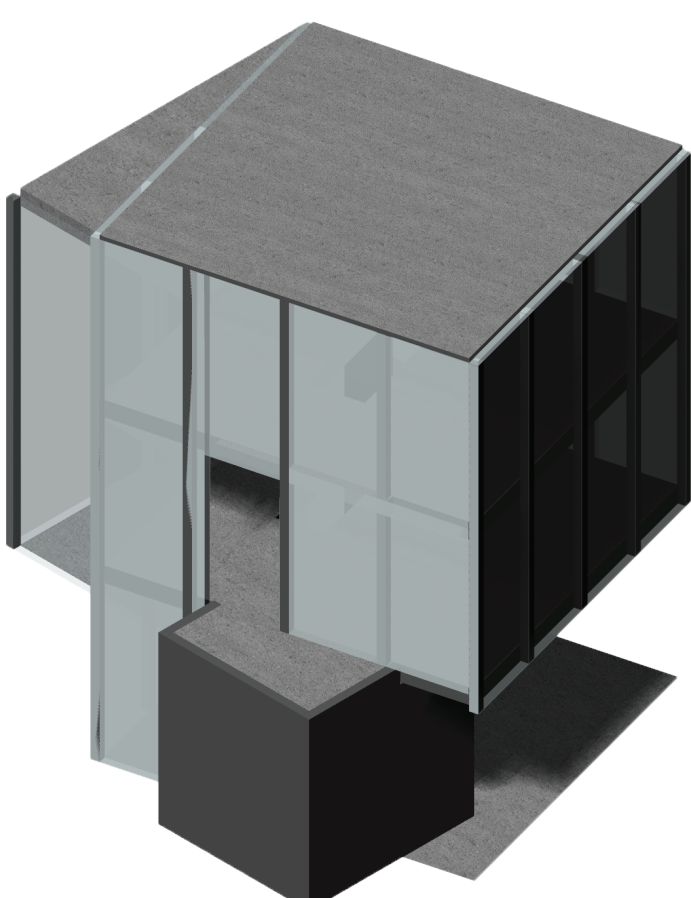
The columns are steel. There is a green roof.



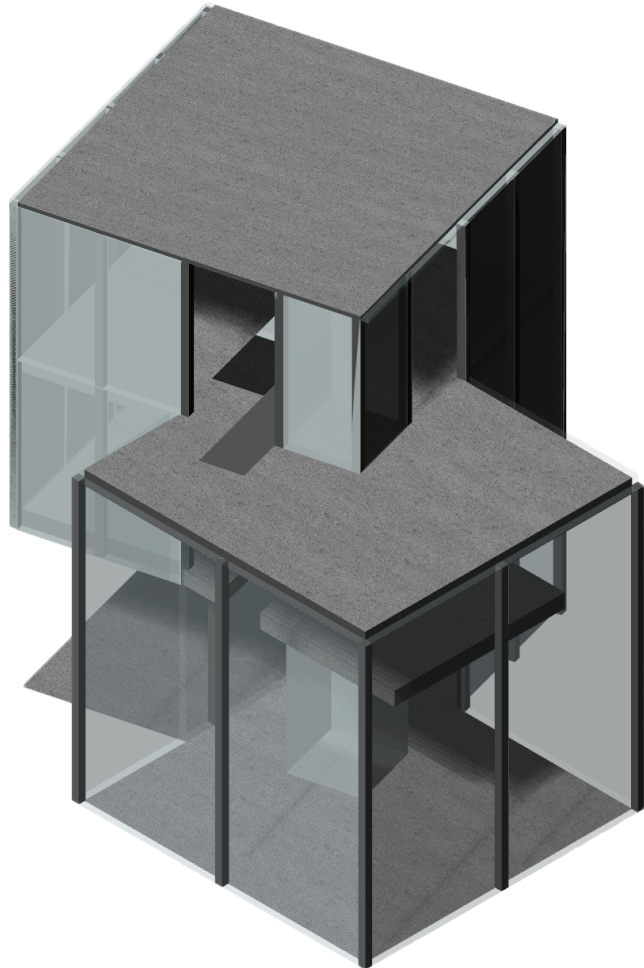
## Archive/ Tectonic Assemblage Prototype



South East Isometric

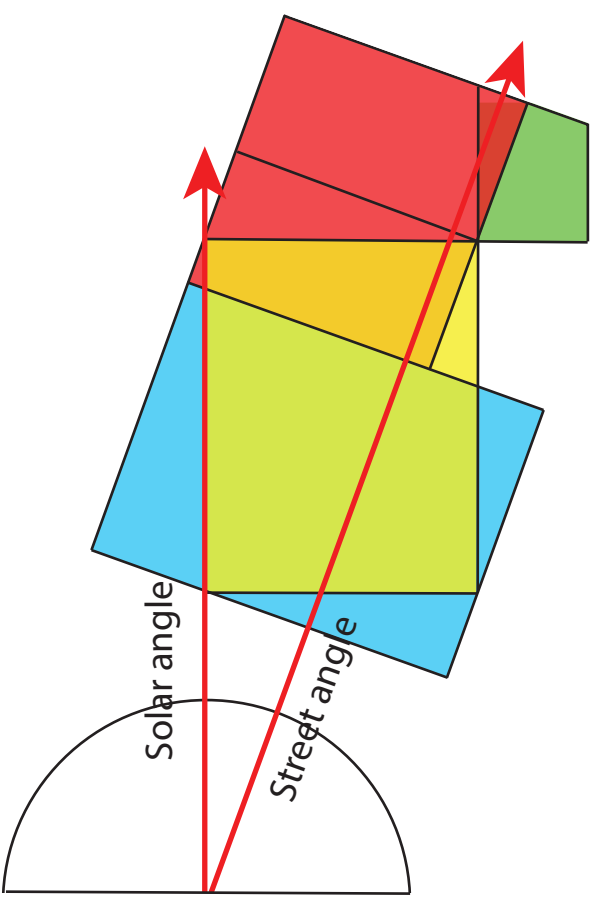
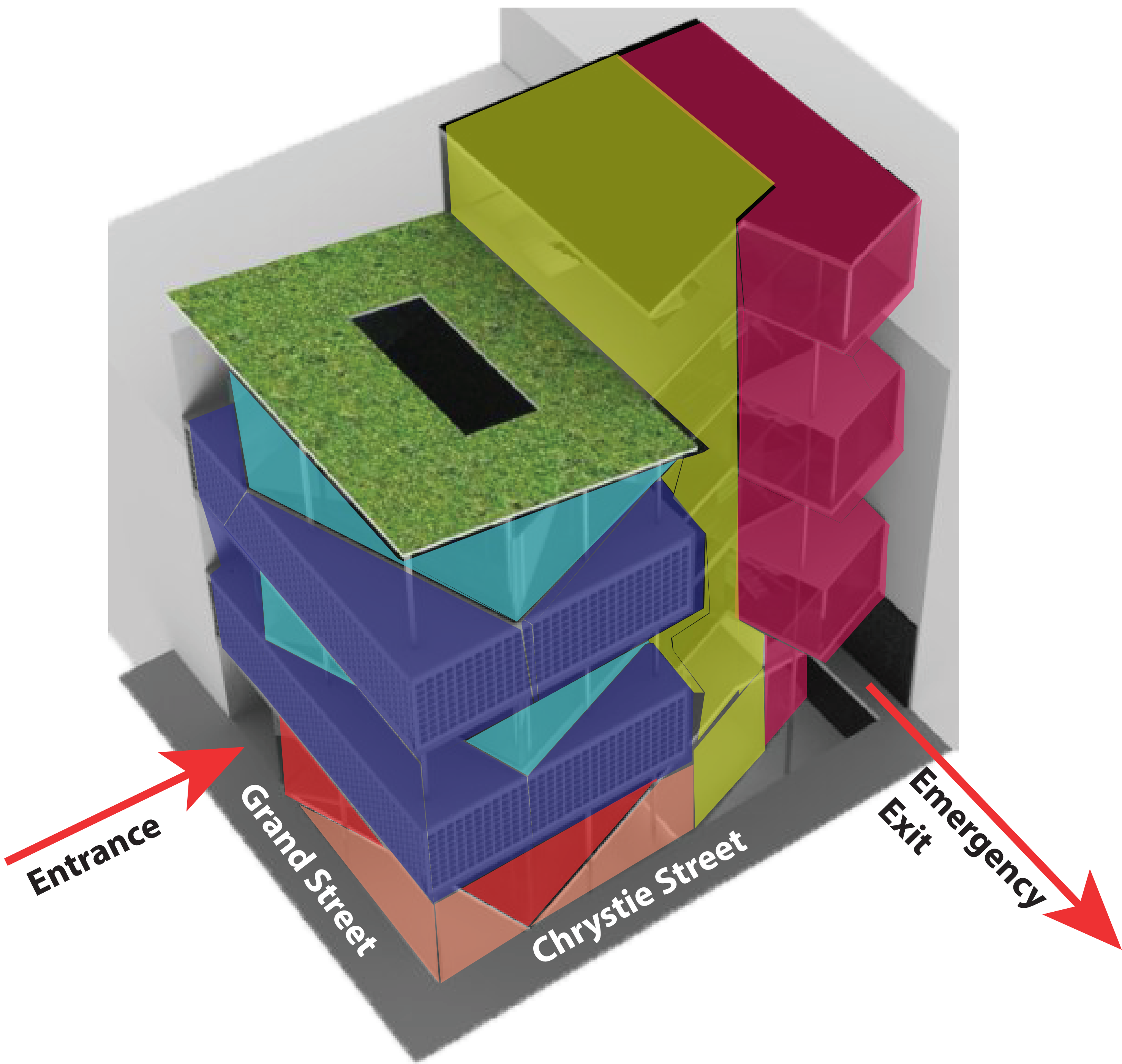


North East Isometric



South West Isometric View

In the prototype, randomly rotated cubes intersected to create new spaces to fit different programs. This time, the two angles that will be taken in the archive project are the street angle and the solar angle. The four shapes used are rectangles of different dimensions.

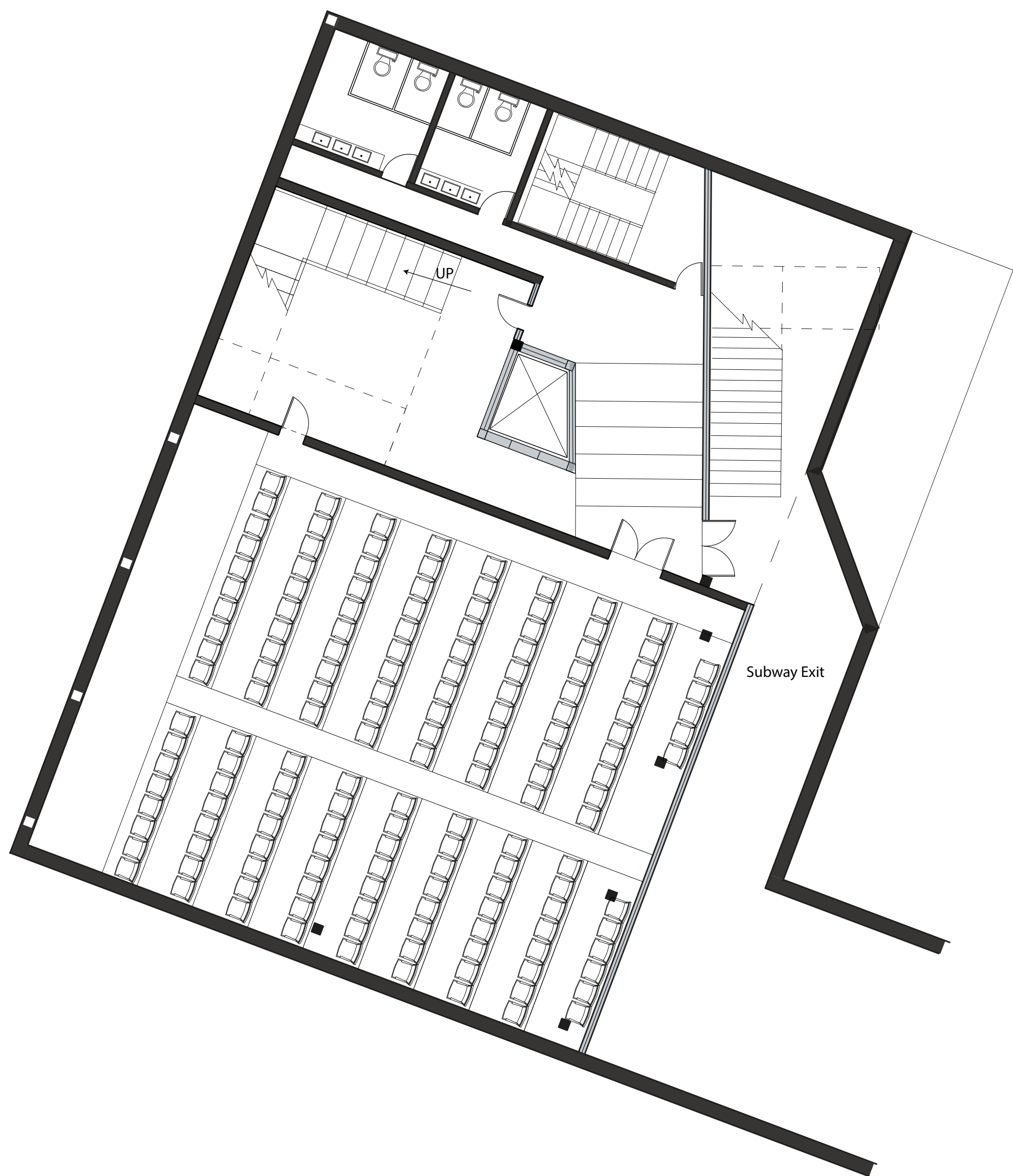


- Core :** -Mechanical Space  
-Staff Office  
-Lavatories  
-Emergency Stairs
- Vertical Circulation:** -Glass Elevator  
-Stair
- Reading Space**
- Archive**
- Entry**
- Auditorium**
- Green Roof**

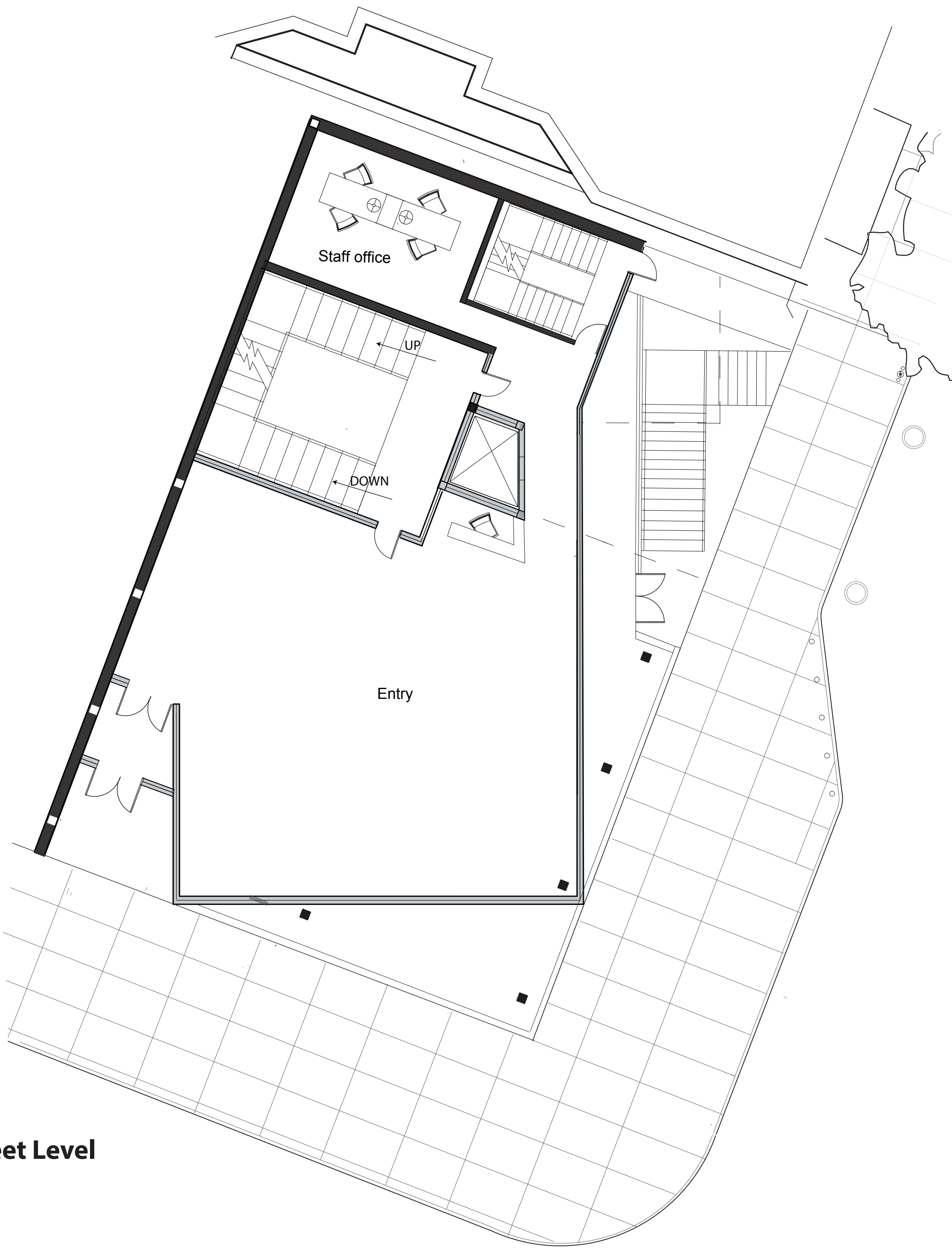


# Plans

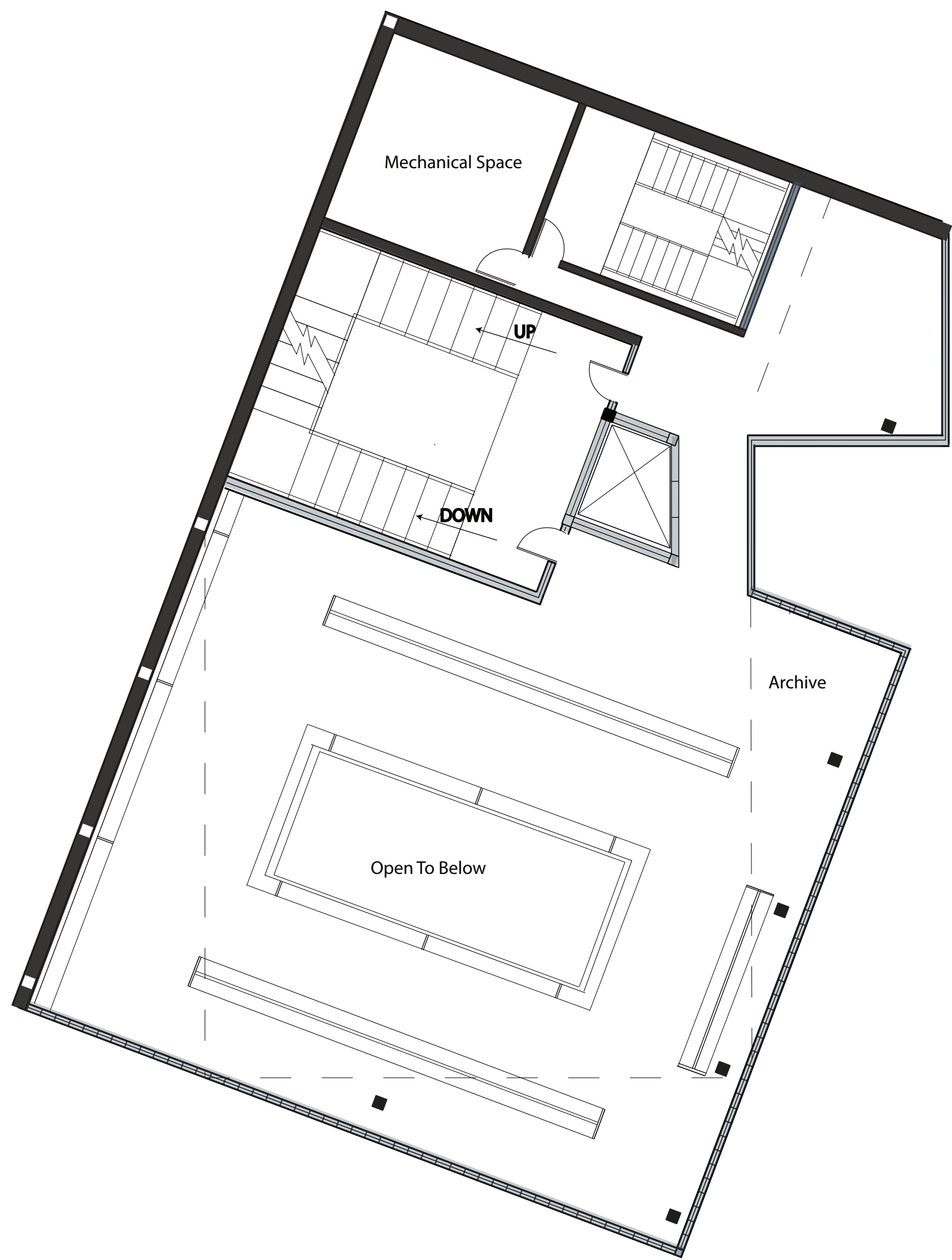
Scale 1'=1/8"



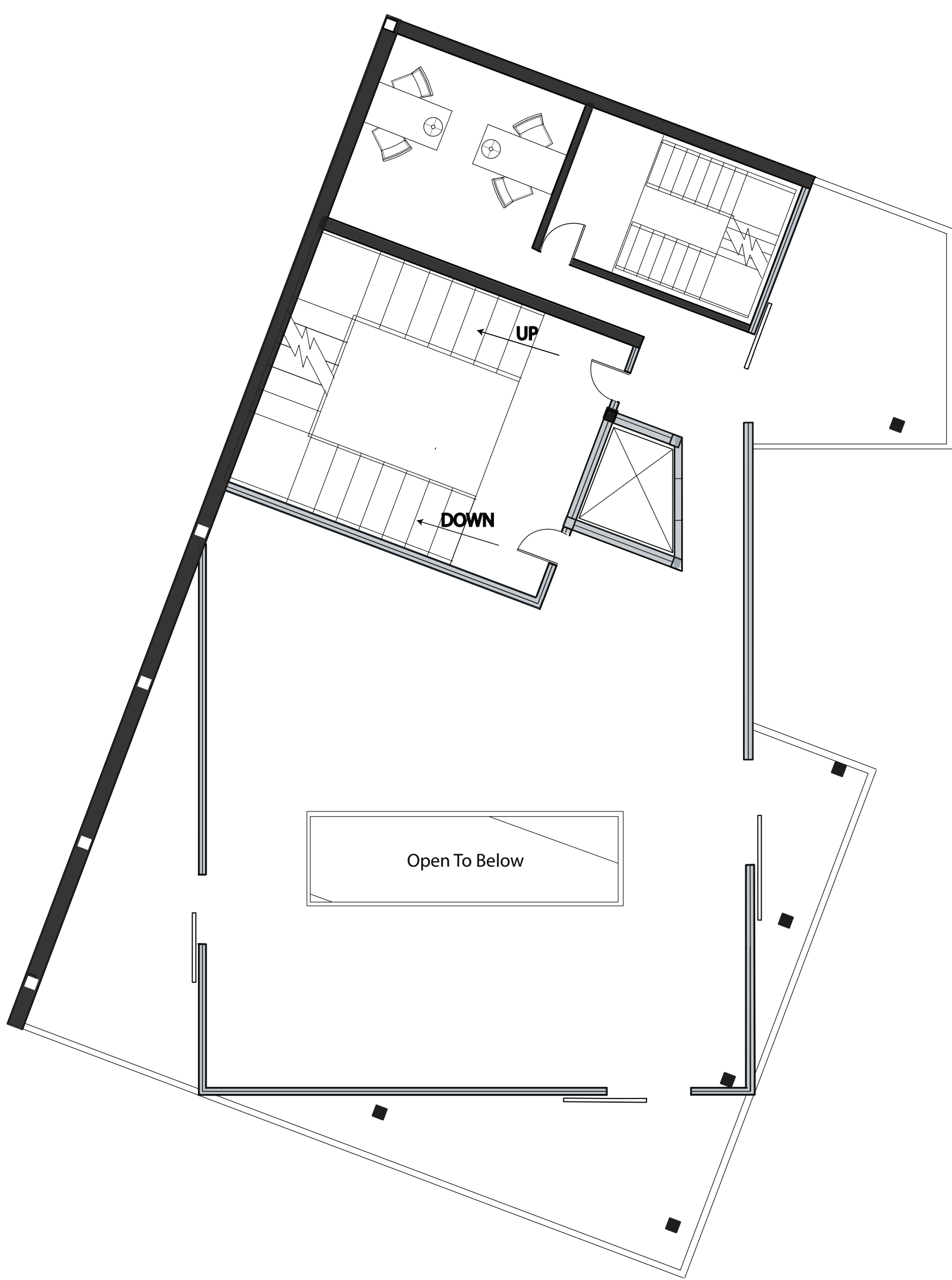
Underground Level



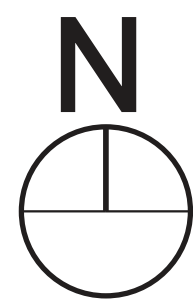
Street Level



Second and Fourth Level



Third Level

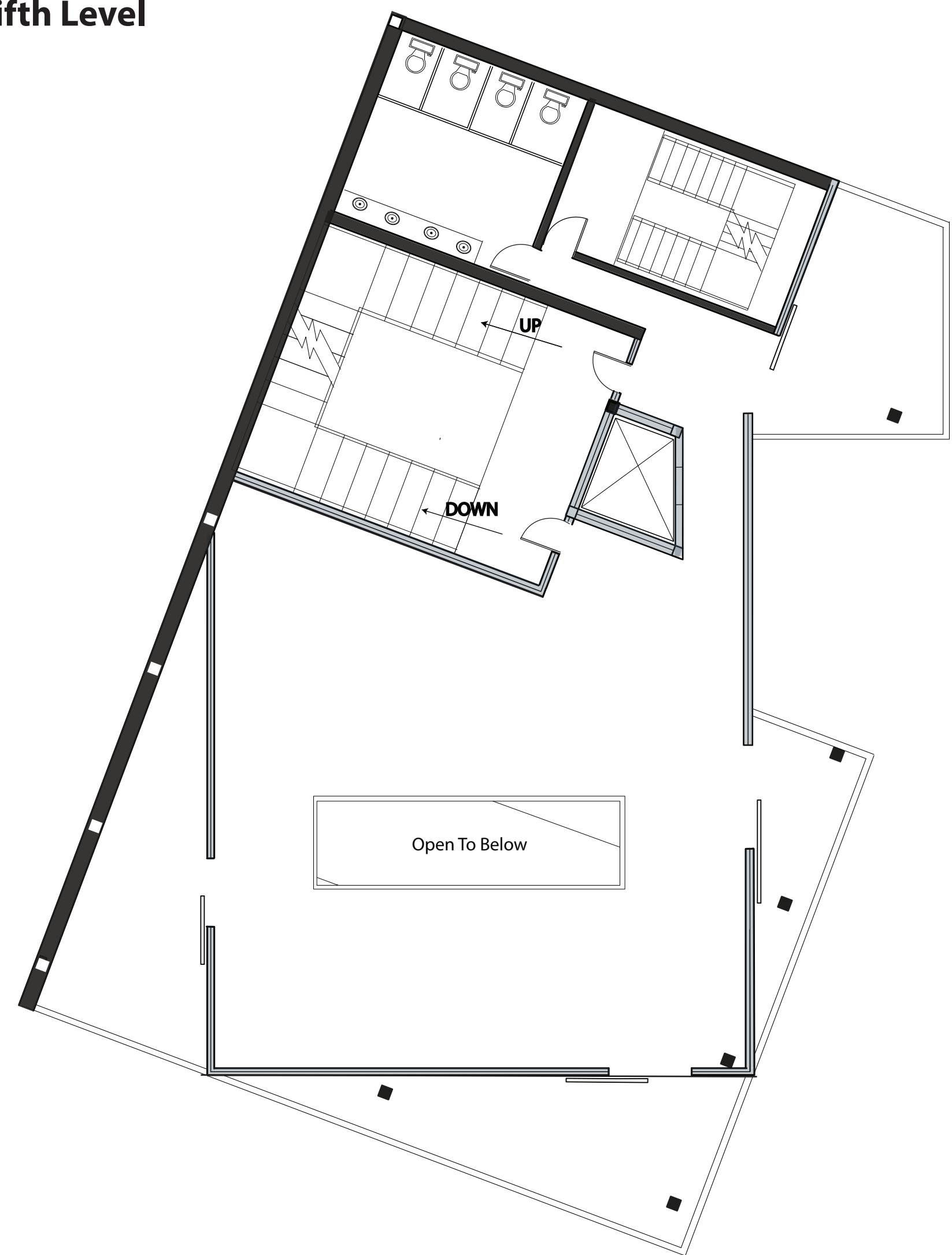




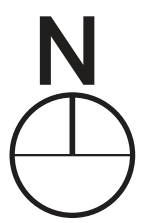
# Plans

Scale 1'=1/8"

Fifth Level



Top Level



# Section

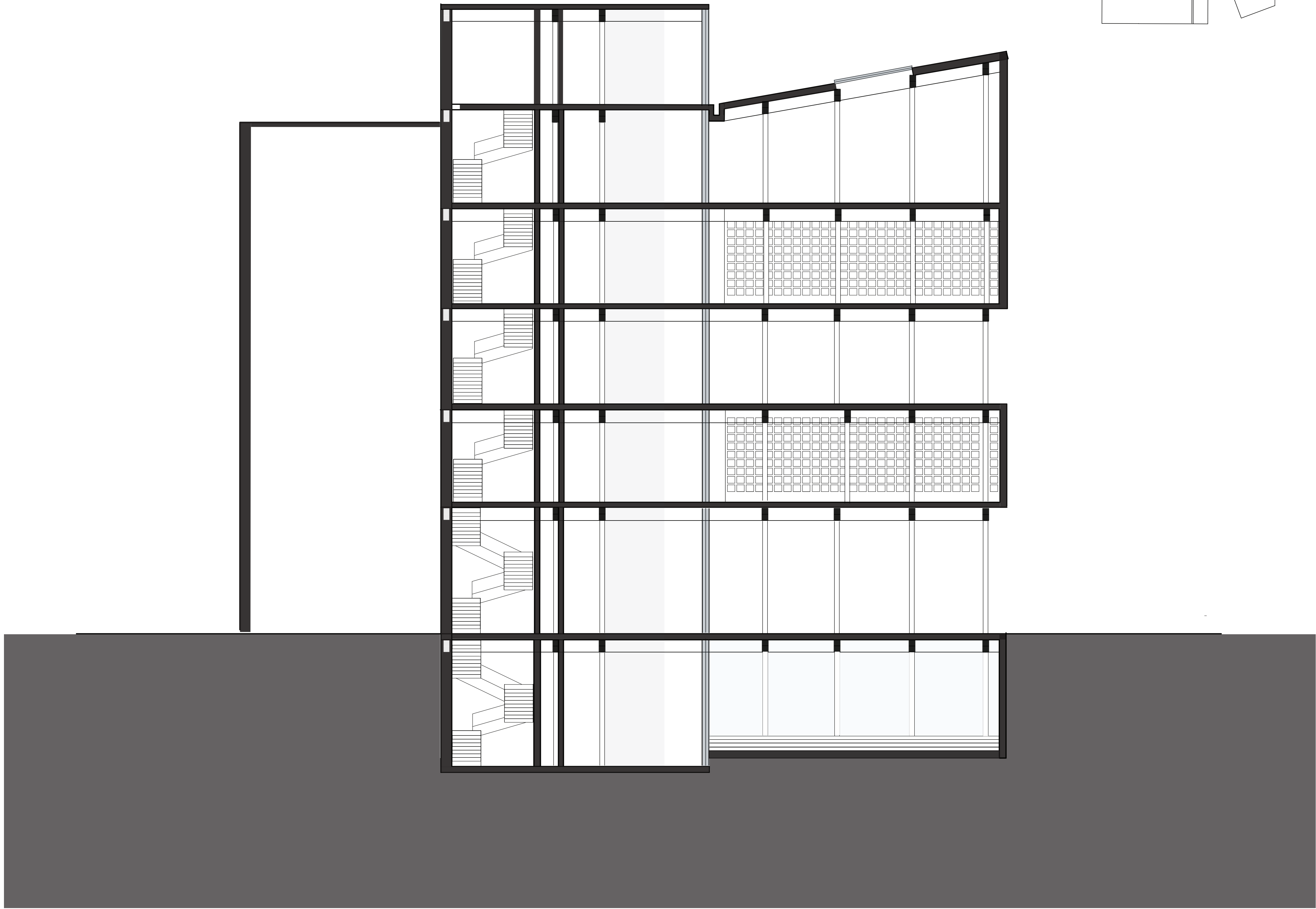
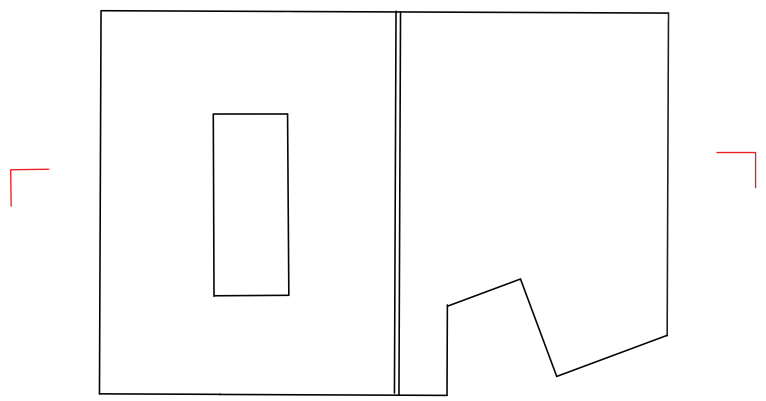
Scale 1'=1/8"



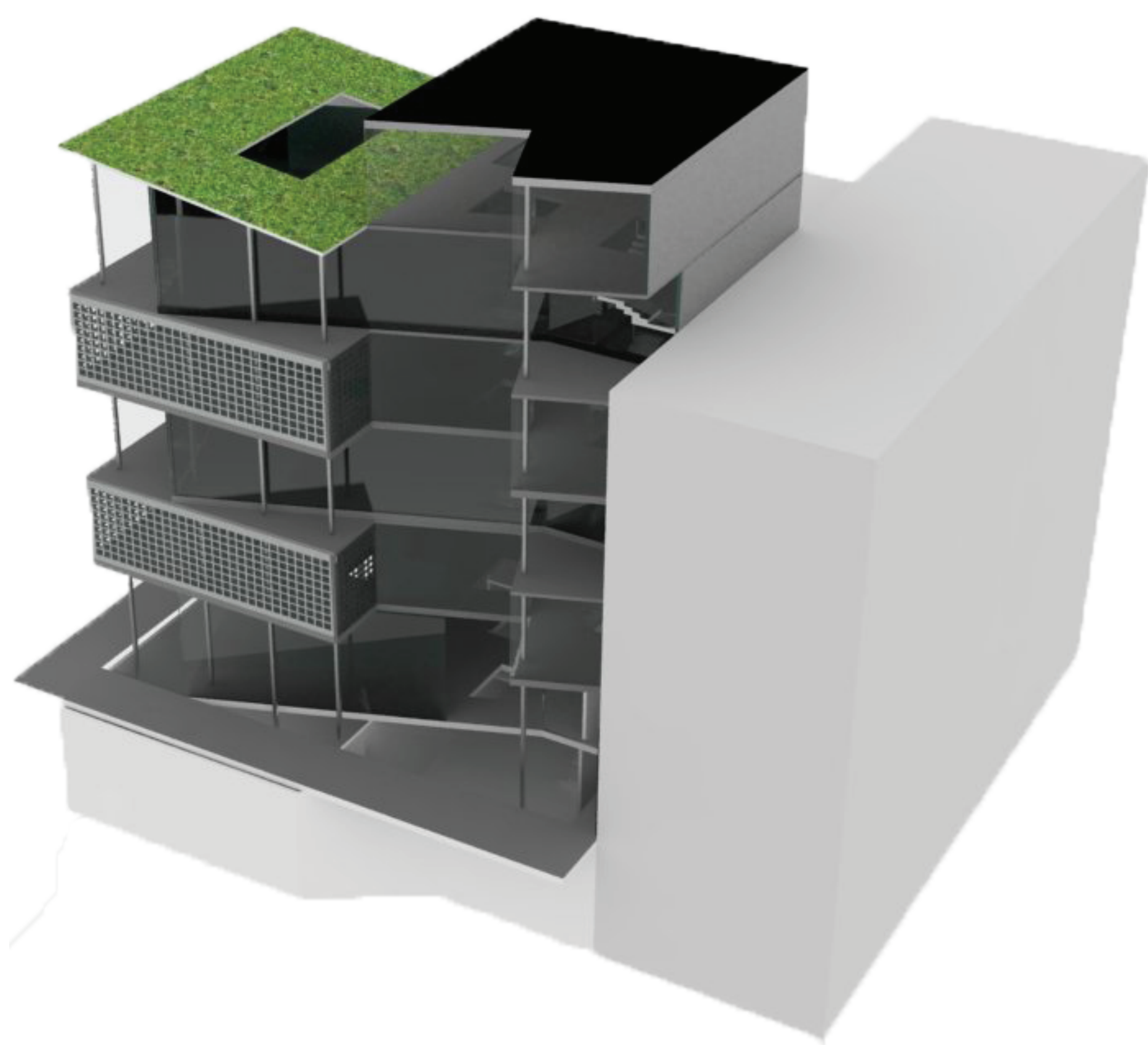
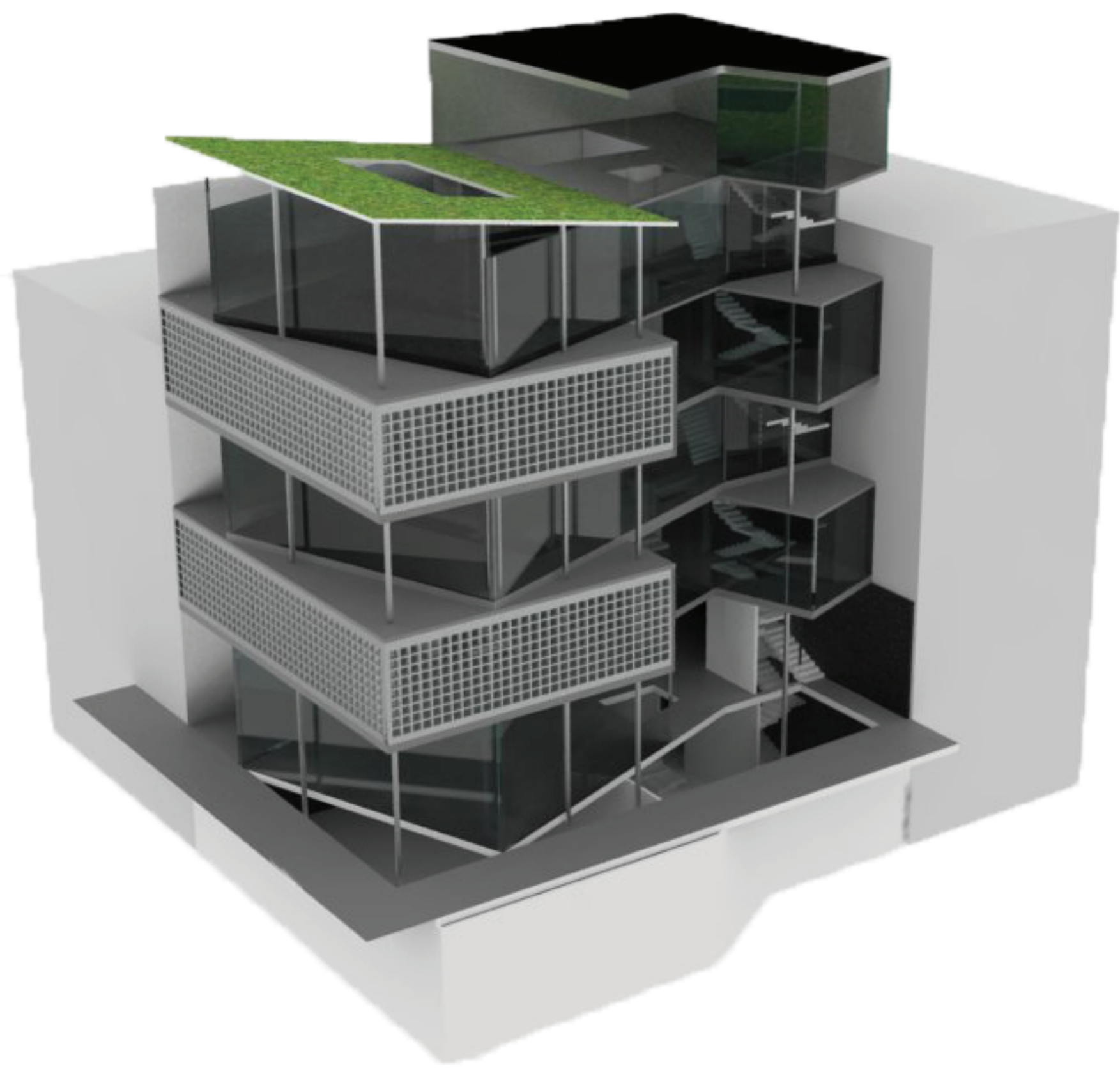


# Section

Scale 1'=1/8"



## Rendered Perspective Views



### Green Roof

The green roof is located only at the slanted roof. It is accesible only for control purposes. It is closed to public and open to staff. There is a skylight on the roof at the same angle as the void spaces. Since the roof is slanted, in case of too much rain, there is a little water collector at the lower edge of the roof. This rain water will then be filtered and used for irrigation and other purposes.